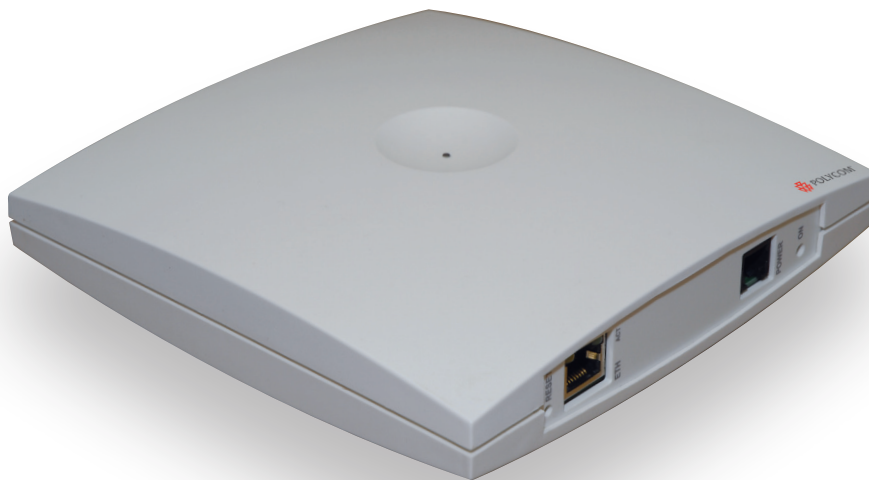


▶ Polycom® KIRK® Wireless Server 6000



KIRK Wireless Server 6000 – The Wireless SIP Solution for Medium to Very Large Businesses

Whether you need radio coverage of a large geographical area or to equip a large number of mobile employees with the flexibility of wireless telephony – or both – the KIRK Wireless Server 6000 is an excellent choice.

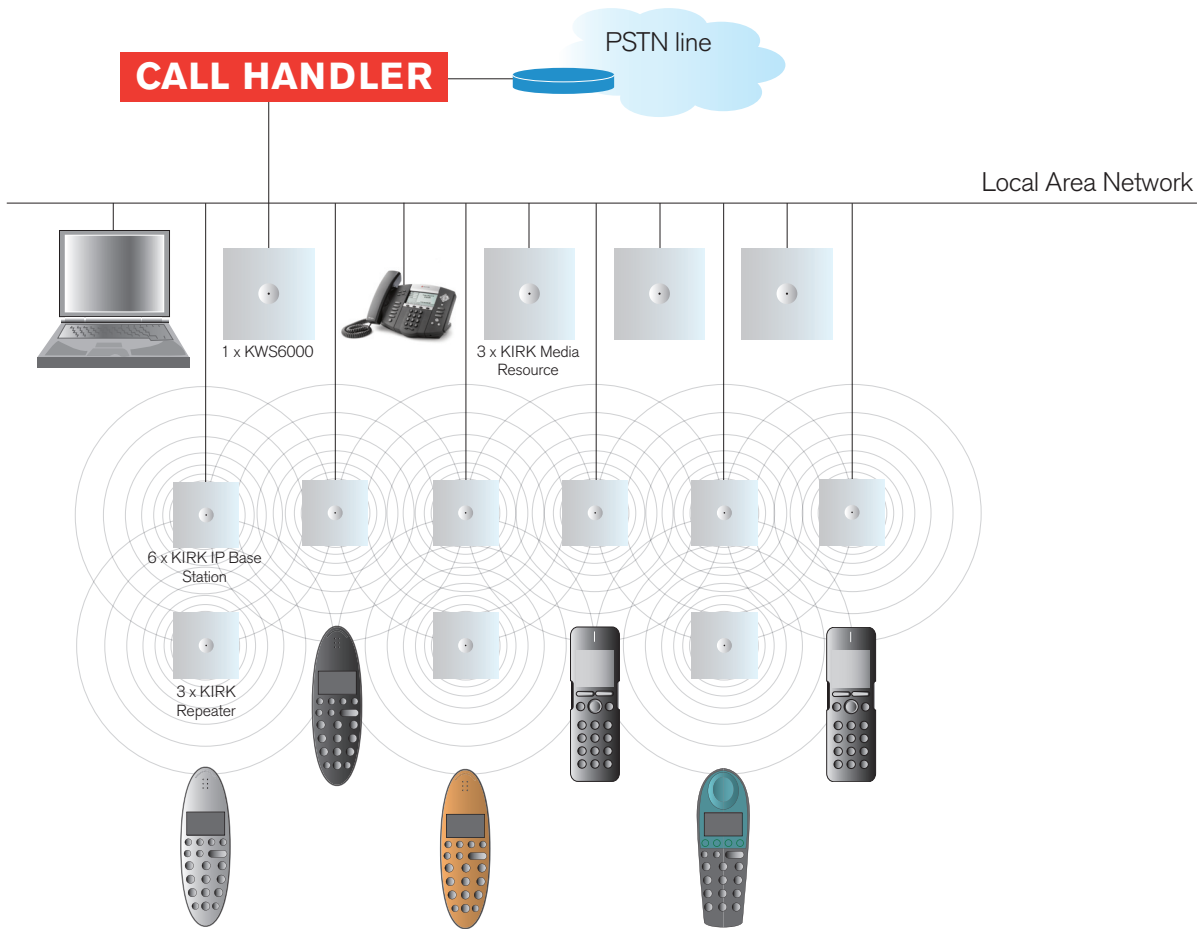
With its extremely scalable nature, the KIRK Wireless Server 6000 can fulfill the wireless needs of up to 4096 mobile employees – and can therefore grow with you as you expand your business.

A KIRK Wireless Server 6000 solution consists of a number of different infrastructure elements; the KIRK Wireless Server 6000 itself, KIRK Media Resources, KIRK IP Base Stations and KIRK Repeaters. These can be joined to produce a wireless solution customized to fit the exact needs of the individual customer.

KIRK Wireless Server 6000

- ▶ **Mobility**
For up to 4096 wireless users
- ▶ **Flexibility**
With up to 256 radio units
- ▶ **Scalability**
Grow the solution as you grow your business
- ▶ **Simplicity**
With direct connection to the LAN
- ▶ SIP interface
- ▶ Digium Asterisk Compatible
- ▶ Single web portal for administration and maintenance
- ▶ Modular design for simple installation and scalability
- ▶ Text messaging application support
- ▶ Keep Your Quality Connection - on the Move

► Configuration of the Polycom KIRK Wireless Server 6000



The KIRK Wireless Server 6000 is the control unit acting as SIP integration unit to the SIP IP-PBX. The KWS6000 furthermore controls and handles the other infrastructure elements. There are 32 available channels in a standalone KWS6000.

The flexible license option allows you to only pay for extra users when you need it. You pay, you upgrade and you have more mobile users.

The KIRK Media Resource makes it possible to add another 32 channels to a KWS6000 solution. It furthermore handles the media stream from the SIP server and voice is thus distributed from the KIRK Media Resource to the KIRK IP Base Station. In a solution with a standalone KWS6000, the media stream distribution is also handled by the KWS6000 (for up to 32 channels).

The KIRK IP Base Stations available for the KWS6000 are 12 channel base stations which can be connected directly to the LAN. The KIRK IP Base Stations handle call signalling from the KWS6000 over the air to the KIRK Handsets and voice distribution from the KWS6000/KIRK Media Resource over the air to and from the KIRK Handsets.

The KIRK Repeaters are used to extend radio coverage. In a KWS6000 solution 4-channel KIRK Repeaters are to be used.

For an overview of a possible KIRK Wireless Server 6000 configuration, please see the illustration shown above.

©2008 Polycom, Inc. All rights reserved
Specifications subject to change without notice.
KIRK is a registered trademark of Polycom Inc. All other trademarks are the property of their respective owners.